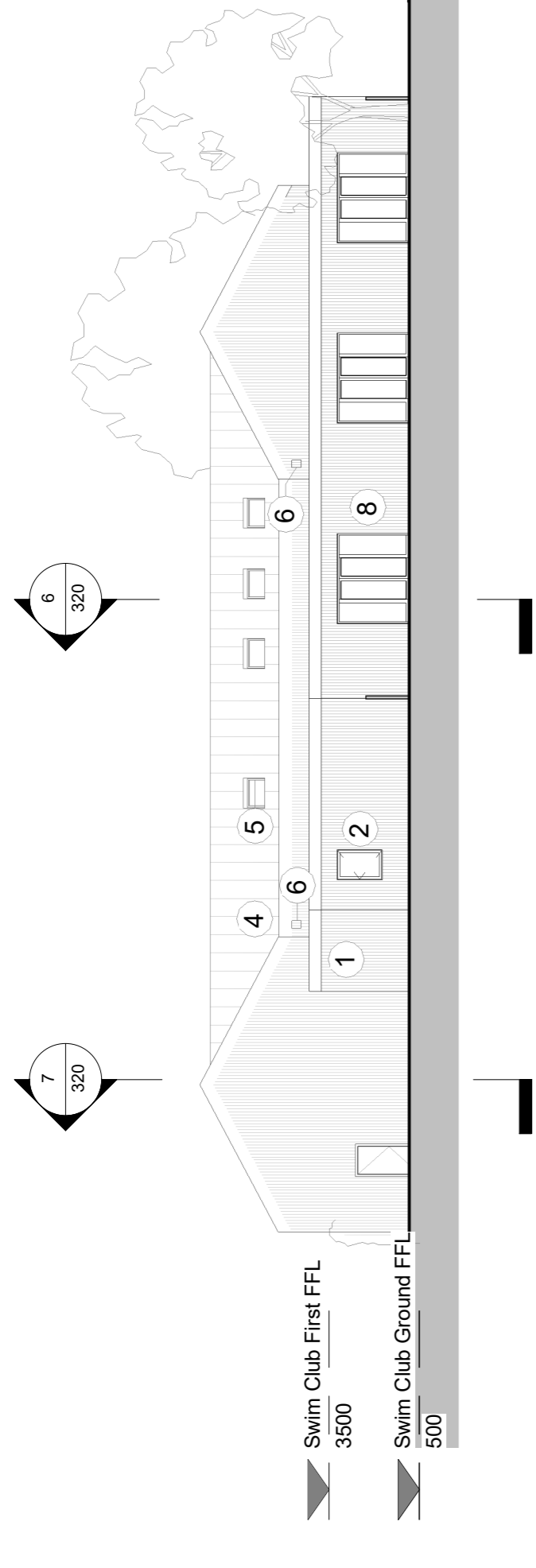
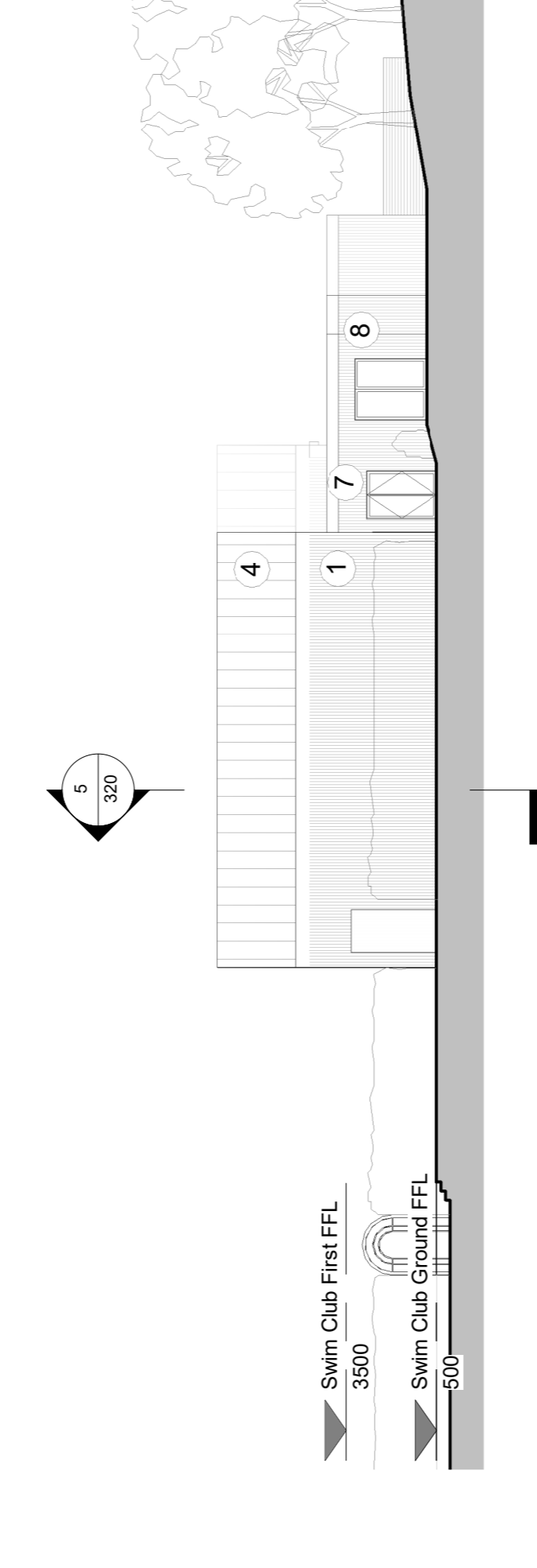


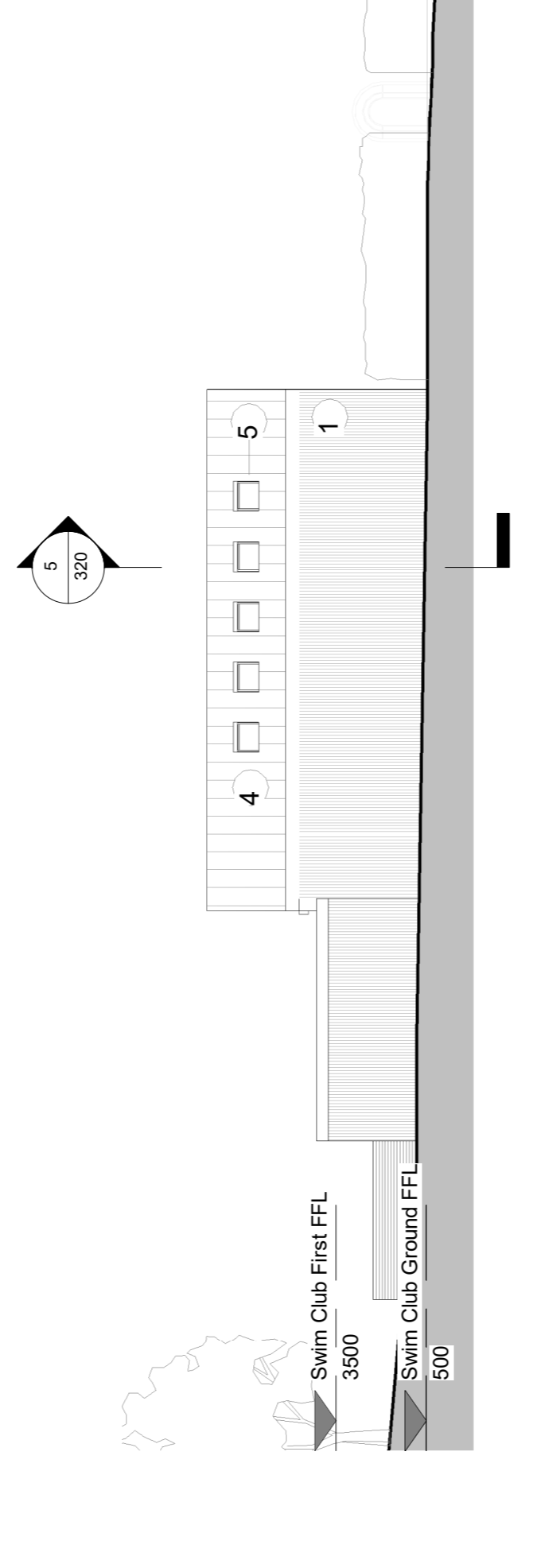
1 Swim Club South Elevation
1 : 200



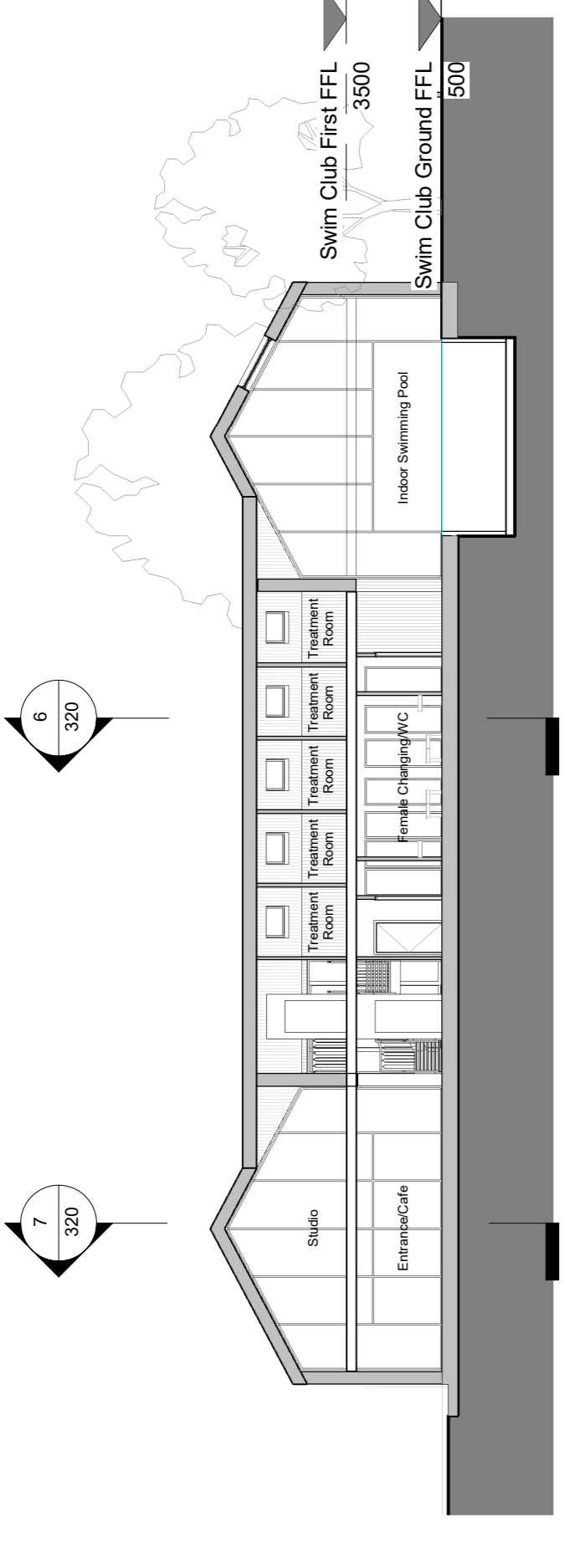
2 Swim & Kids Club North Elevation
1 : 200



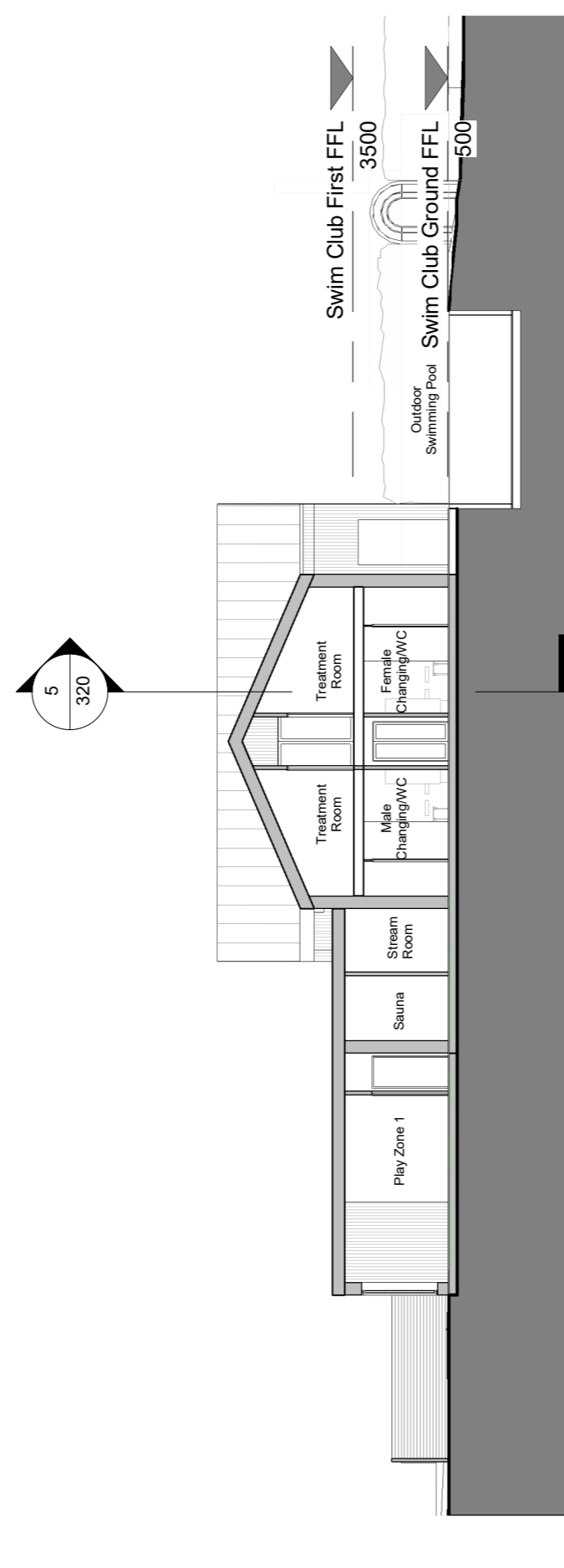
3 Swim & Kids Club East Elevation
1 : 200



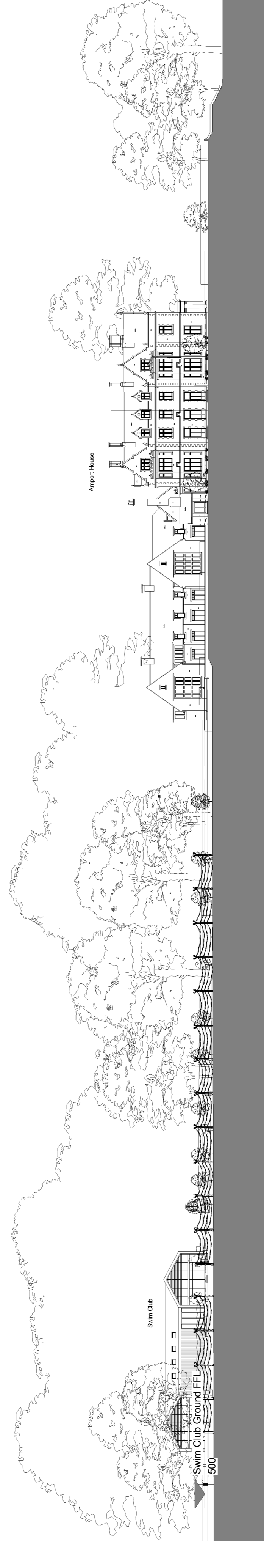
4 Swim & Kids Club West Elevation
1 : 200



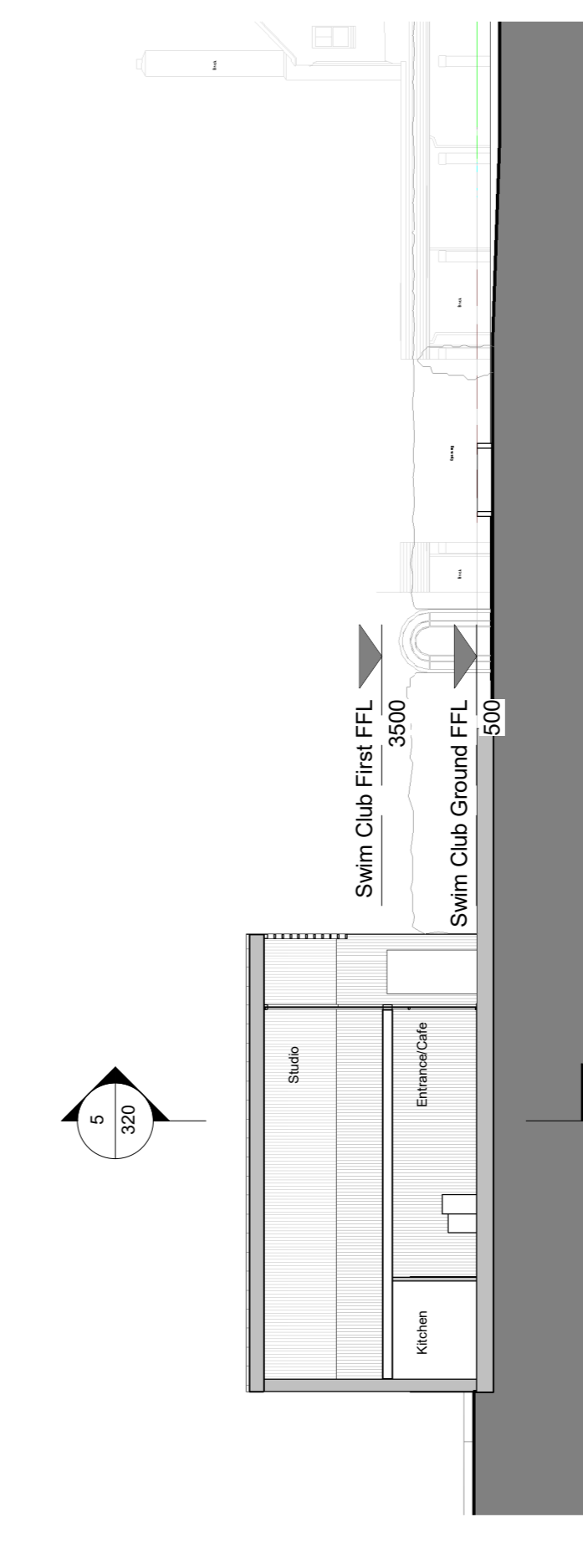
5 Swim Club Section A-A
1 : 200



6 Swim Club Section B-B
1 : 200



8 Proposed Long Section
1 : 500



7 Swim Club Section C-C
1 : 200

Revisions

Rev	Date	Description	Drawn By	Approved By
P1	23.07.2021	Planning	OJ	LP
P2	05.04.2022	Planning	BH	LP
P3	19.05.2022	Planning	BH	LP
P4	19.05.2022	Planning	BH	LP
P5	31.05.2022	Planning	BH	LP
P6	31.08.23	Planning	OJ	LP

GRAPHIC SCALE 1:500 T1000/A3

0m 5m 10m 20m 30m

Key

1	Natural Timber Cladding	5	Timber Framed Aluminium Cladded Roofing
2	Timber Framed Aluminium Cladded Window	6	Bit Box
3	Natural Timber Louves	7	Timber Framed Timber Clad Door
4	Painted Metal Roofing	8	Timber Framed Aluminium Cladded Glass Clad

Note:

TATE + CO
Architects
Unit G1 68 Sharncliffe Works
3 Cole Street, London N1E 6EA
T +44 (0)20 7461 1461
E info@tateco.com

Client: **Another Place**
Project: **Airport House**
Drawing Title: **Swim and Kids Club Elevations and Sections**
Drawing Number: **AMH TTHA 02 XX DR A**
Scale: **1:200**
As Indicated

Drawn By: **OJ**
Date of Issue: **06/29/18**
Project Status: **Planning**

Page size: **A1**
Page number: **320** of **320**